

MONTHLY MEMBERSHIP PROGRESS REPORT

LOCATION FLORIDA

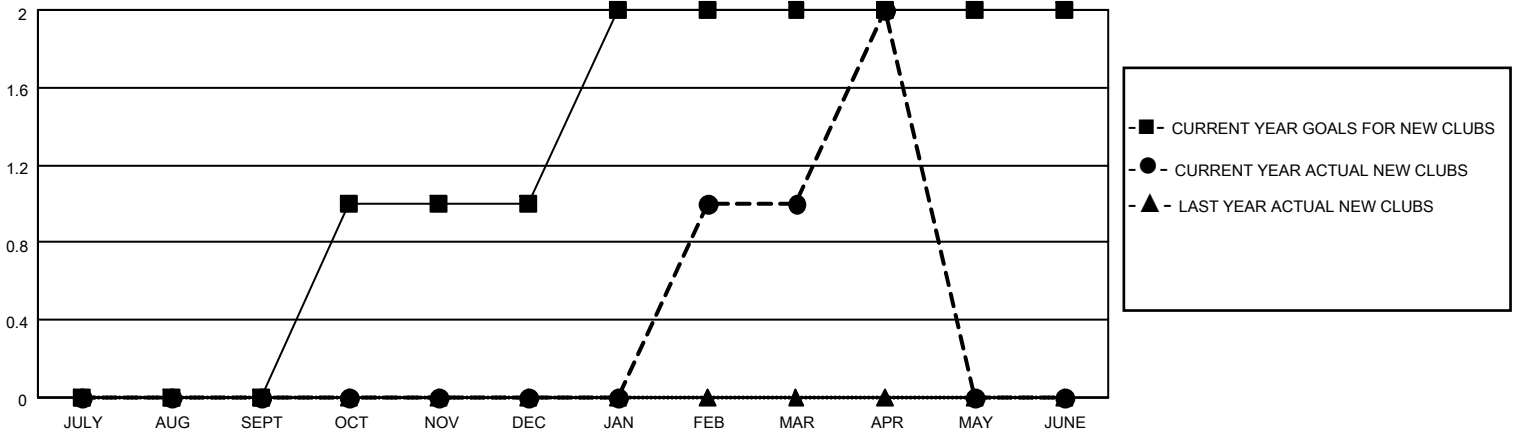
District 35 N

Results as of: 4/30/2022

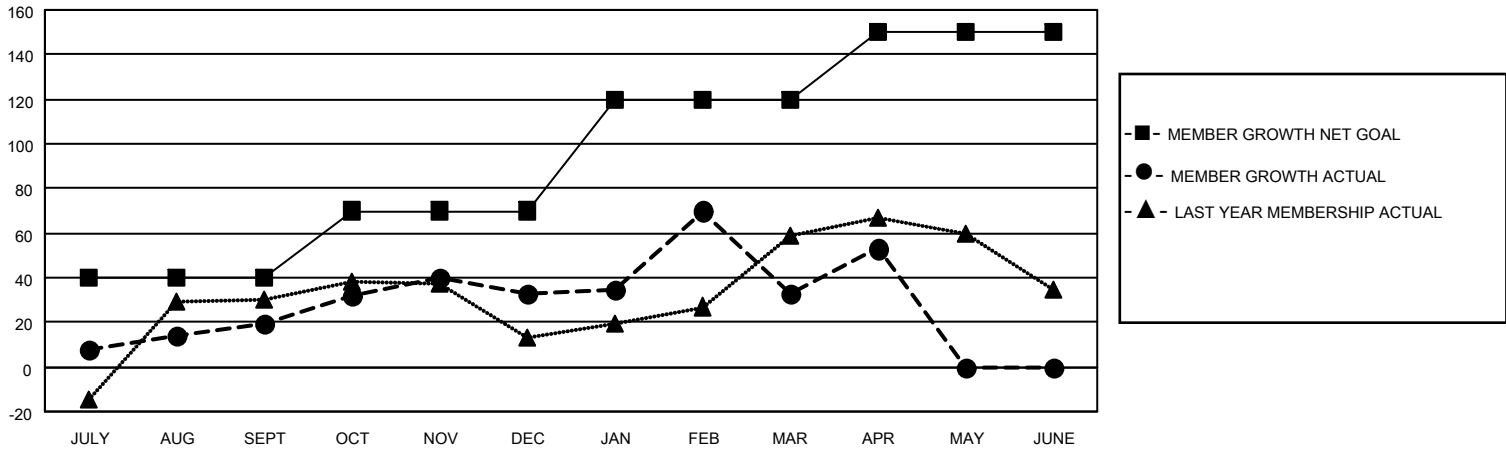
Clubs			
RESULTS FOR 2021-2022			
QUARTER	NEW CLUB GOAL	NEW CLUBS	DROPPED CLUBS
JULY/AUG/SEPT	0	0	0
OCT/NOV/DEC	1	0	0
JAN/FEB/MAR	1	1	0
APR/MAY/JUNE	0	1	0

Members			
RESULTS FOR 2021-2022			
QUARTER	MEMBER GROWTH NET GOAL	MEMBER GROWTH ACTUAL	DROPPED MEMBERS ACTUAL (including transfers)
JULY/AUG/SEPT	40	70	42
OCT/NOV/DEC	30	76	56
JAN/FEB/MAR	50	95	90
APR/MAY/JUNE	30	35	14

GOALS AND ACTUAL NEW CLUBS CUMULATIVE



GOALS AND ACTUAL MEMBERS CUMULATIVE



DROPPED CLUBS: 0

33 CLUBS OF 57 ADDED 1 OR MORE NEW MEMBERS

GENDER DISTRIBUTION

MALE	709 (51.64%)
FEMALE	664 (48.36%)
NON BINARY	0 (0.00%)
PREFER NOT TO ANSWER	0 (0.00%)

DROPPED MEMBERS

[CLICK HERE FOR CUMULATIVE MEMBERSHIP DATA](#)

DECEASED	9
CLUB CANCELLED	0
OTHER	193
TOTAL	202

TOTAL FAMILY UNIT MEMBERS 249

FAMILY MEMBERS PAYING HALF DUES 131